

OF SIDE WALL JACKETED PIPE OUTLET PIPE

- (1) THE REINFORCING RING ALSO SERVES AS INSULATION SUPPORT, MADE OF S31603 MATERIAL, WITH DIMENSIONS L12X51X205MM, AND A SPACING OF APPROXIMATELY 3000mm PER HOUR. IT MUST NOT BE INTERPRETED. IT MAY BE ADJUSTED UP OR DOWN WITHIN THE RANGE OF 1000 TO 3000mm SUPPORT LUGS, BUT THE MAXIMUM SPACING MUST NOT EXCEED 3000mm.
- (2) THE EQUIPMENT'S WEIGHT INCLUDES THE PRE-WELDED COMPONENTS OUTSIDE THE TOWER, WHILE THE PRE-WELDED COMPONENTS INSIDE THE TOWER ARE DESIGNED BY THE INTERNAL COMPONENTS MANUFACTURER AND SUPPLIED BY THE TOWER EQUIPMENT MANUFACTURER. THE WEIGHT OF THE PRE-WELDED COMPONENTS OUTSIDE THE TOWER IS APPROXIMATELY 1000kg, AND THE WEIGHT OF THE PRE-WELDED COMPONENTS INSIDE THE TOWER IS APPROXIMATELY 2000kg.
- (3) ALL THE MOUNTED PRESSURE GAUGES AND THERMOCOUPLES TO MEASURE THE GAS PHASE, AND THE PRESSURE MEASUREMENT POINTS SHOULD BE INSTALLED AT AN UPWARD ANGLE TO PREVENT LIQUID ACCUMULATION.
- (4) THE FOLLOWING PIPE SPECS REQUIRE HEAT TRACING, WITH THE SPECIFICATIONS AS FOLLOWS:
  - NOT OPENING HEAT TRACING INLET IS I1, HEAT TRACING OUTLET IS O1, HEAT TRACING PIPE SPECIFICATION IS NPS 1/2, CONNECTING PIPE SPECIFICATION IS 402.73X3.73.
  - NOT OPENING HEAT TRACING INLET IS I2, HEAT TRACING OUTLET IS O2, HEAT TRACING PIPE SPECIFICATION IS NPS 1, CONNECTING PIPE SPECIFICATION IS 402.73X4.05.
  - NOT OPENING HEAT TRACING INLET IS I3, HEAT TRACING OUTLET IS O3, HEAT TRACING PIPE SPECIFICATION IS NPS 3/4, CONNECTING PIPE SPECIFICATION IS 402.73X3.73.
  - NOT OPENING HEAT TRACING INLET IS I12, HEAT TRACING OUTLET IS O12, HEAT TRACING PIPE SPECIFICATION IS NPS 2, CONNECTING PIPE SPECIFICATION IS 460.35X5.54.
  - NOT OPENING HEAT TRACING INLET IS I14, HEAT TRACING OUTLET IS O14, HEAT TRACING PIPE SPECIFICATION IS NPS 1/2, CONNECTING PIPE SPECIFICATION IS 402.73X3.73.
  - NOT OPENING HEAT TRACING INLET IS I5, HEAT TRACING OUTLET IS O5, HEAT TRACING PIPE SPECIFICATION IS NPS 1/2, CONNECTING PIPE SPECIFICATION IS 402.73X3.73.
  - NOT OPENING HEAT TRACING INLET IS I6, HEAT TRACING OUTLET IS O6, HEAT TRACING PIPE SPECIFICATION IS NPS 3/4, CONNECTING PIPE SPECIFICATION IS 402.73X3.73.
  - NOT OPENING HEAT TRACING INLET IS I7, HEAT TRACING OUTLET IS O7, HEAT TRACING PIPE SPECIFICATION IS NPS 3/4, CONNECTING PIPE SPECIFICATION IS 402.73X3.73.
  - O1-42 OPENING HEAT TRACING INLET IS I1,HEAT TRACING OUTLET IS O1,HEAT TRACING PIPE SPECIFICATION IS NPS 1/2, CONNECTING PIPE SPECIFICATION IS 402.73X3.73.
  - O1-62 OPENING HEAT TRACING INLET IS I6,HEAT TRACING OUTLET IS O1-6,HEAT TRACING PIPE SPECIFICATION IS NPS 1/2, CONNECTING PIPE SPECIFICATION IS 402.73X3.73.
- (5) THE ENTIRE TOWER (EXCLUDING THE END HEADS) USES EXTERNAL HALF-PIPE HEATING. THE HALF-PIPE SPECIFICATION IS DN100, WITH A CENTER-TO-CENTER SPACING OF 160mm. EACH HALF-PIPE SECTION IS NO LONGER THAN 50m WITH AN OUTLET. VIEWED FROM TOP TO BOTTOM, THE HALF-PIPE COIL IS WOUND CLOCKWISE. WHEN ENCOUNTERING OBSTACLES SUCH AS OPENINGS THAT CANNOT BE BYPASSED, DN100 PIPES CAN BE USED FOR CONNECTION.
- (6) THE HEATING ENVIRONMENT FOR THE EQUIPMENT SHALL BE DETERMINED THROUGH CONSULTATION BETWEEN THE MANUFACTURER, THE OWNER, AND THE INSTALLATION UNIT. MINIMIZE THE SALT AND SUEX OF THE LIFTING LUGS.
- (7) THE ANGLE BETWEEN THE TOP COLUMN AND THE MANIPULATOR SHALL NOT EXCEED 90°, AND THE ANGLE BETWEEN THE LIFTING LUG AND THE TAIL LUG SHALL BE 90°.
- (8) NOT OPENING IS EQUIPPED WITH A LIQUID DISTRIBUTOR, DESIGNED AND SUPPLIED BY THE INTERNAL PARTS VENDOR.
- (9) NOT OPENING INCLUDES A VORTEX BREAKER.
- (10) THE EQUIPMENT IS REQUIRED TO PASS A HORIZONTAL HYDRAULIC TEST, EFFECTIVE MEASURES MUST BE TAKEN TO PREVENT DEFORMATION OF THE EQUIPMENT.

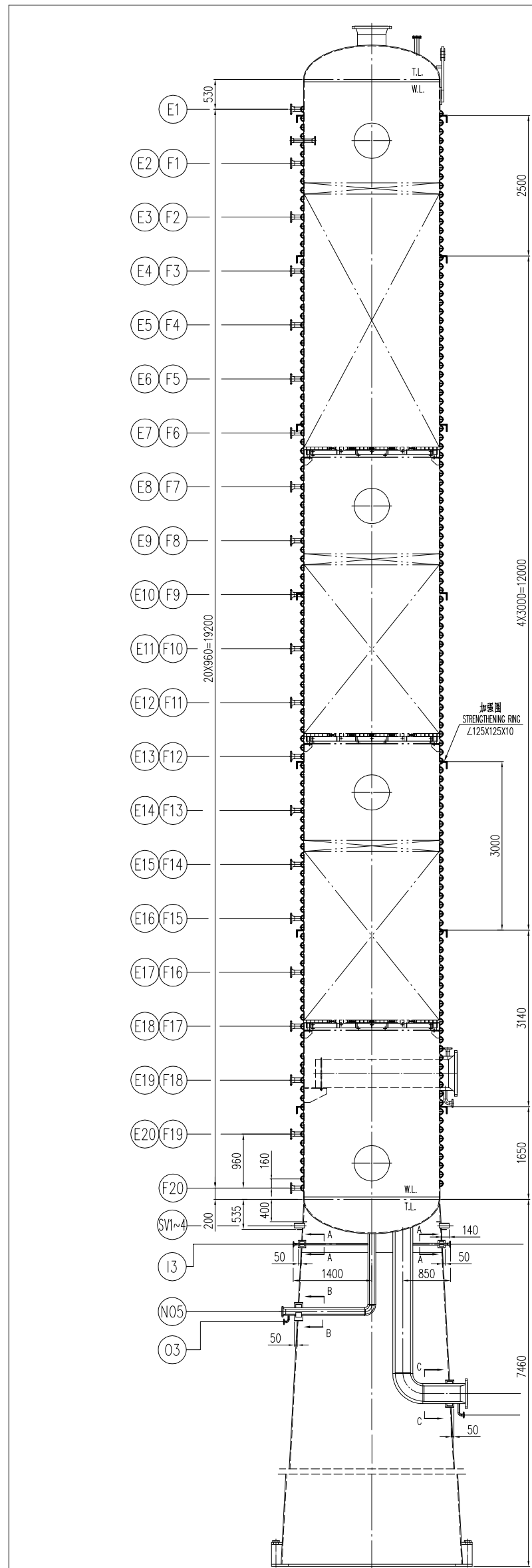
NOZZLE TABLE							
序号 SYMBOL	规范名称 SERVICE	数量 QTY.	公称尺寸 NPS	公称压力 RATING	连接标准及形式 STANDARD AND TYPE/FACE	材料规格 MATERIAL SPEC.	接管长度 PROJECTED LENGTH
N01	蒸汽入口 INLET	1	2" X 3"	Class50	SH/T 3426 WN/F	Ø60.3X8.74/ Ø58.9X7.62	1480
N02	蒸汽出口 VAPOR OUTLET	1	10" x 10"	Class50	ASME B16.5 WN/F	Ø50X816	根据 SEE DRAW
N03	再沸器循环入口 REBOILER FLOW INLET	1	10" X14"	Class50	SH/T 3426 WN/F	Ø273X12.7/ Ø255.6X12.7	根据 SEE DRAW
N04	再沸器回流 REFLUX CONNECTION	1	2"	Class300	ASME B16.5 WN/F	Ø60.3X8.74	1450
N05	蒸汽出口 OUTLET	1	3" X 6"	Class50	SH/T 3426 WN/F	Ø58.9X7.62/ Ø58.3X10.97	根据 SEE DRAW
N06	再沸器回流 TO REBOILER	1	20" X24"	Class50	SH/T 3426 WN/F	Ø50X816/ Ø610X14	1520
N07	蒸汽入口 (SAPIC CONNECTION/W/B)	1	2" X 3"	Class50	SH/T 3426 WN/F	Ø60.3X8.74/ Ø58.9X7.62	1480
N08	蒸汽循环 POWER CIRCULATION	1	2" X 3"	Class50	SH/T 3426 WN/F	Ø60.3X8.74/ Ø58.9X7.62	1480
N09	再沸器循环入口 WOBAR FLOW EXIST INLET	1	6" X 8"	Class50	SH/T 3426 WN/F	Ø168.3X10.97/ Ø161.9X12.7	1500
N10	再沸器循环出口 WOBAR FLOW EXIST OUTLET	1	6" X 8"	Class50	SH/T 3426 WN/F	Ø168.3X10.97/ Ø161.9X12.7	1500
M01-M04	放空 DRAINABLE	4	24"	PN16	HG/T 21521 WN/F	Ø630X14	根据 SEE CO ORDINATION
C11~C15	蒸汽连接入口(管法兰/W/B) STEAM CONNECTION(W/B)	5	1-1/2"	Class50	ASME B16.5 LWN/F	Ø65X12	根据 SEE CO ORDINATION
C31	蒸汽连接入口(管法兰/W/B) STEAM CONNECTION(W/B)	1	2"	Class50	ASME B16.5 LWN/F	Ø78X13	根据 SEE DRAW
C32	蒸汽连接入口(管法兰/W/B) STEAM CONNECTION(W/B)	1	2"	Class50	ASME B16.5 LWN/F	Ø78X13	根据 SEE DRAW
C41	蒸汽连接入口(管法兰/W/B) STEAM CONNECTION(W/B)	1	2" X 3"	Class50	SH/T 3426 WN/F	Ø60.3X8.74/ Ø58.9X7.62	1480
C42	蒸汽连接入口(管法兰/W/B) STEAM CONNECTION(W/B)	1	2" X 3"	Class50	SH/T 3426 WN/F	Ø60.3X8.74/ Ø58.9X7.62	1480
C51~C52	蒸汽连接入口(管法兰/W/B) STEAM CONNECTION(W/B)	2	3"	Class50	SH/T 3426 WN/F	Ø68.9X7.62	1480
C61~C62	蒸汽连接入口(管法兰/W/B) LG CONNECTION(W/B)	2	2" X 3"	Class50	SH/T 3426 WN/F	Ø60.3X8.74/ Ø58.9X7.62	1480
SV1~4	放空 DRAINPORT PORT	4	3"	--	--	Ø89X4	--
SA1~2	检查孔 CHECK HOLE	2	20"	--	--	Ø528X14	--
E1~20	蒸汽入口 STEAM INLET	20	1"	Class300	ASME B16.5 WN/F	Ø33.4X4.55	根据 SEE DRAW
F1~20	蒸汽出口 STEAM OUTLET	20	1"	Class300	ASME B16.5 WN/F	Ø33.4X4.55	根据 SEE DRAW
I1~I2	热交换入口 ACCOMPANYING HEAT INLET	12	NOTE 4	Class50	ASME B16.5 WN/F	注4 NOTE 4	根据 SEE DRAW
O1~I2	热交换出口 ACCOMPANYING HEATING PORT	12	NOTE 4	Class50	ASME B16.5 WN/F	注4 NOTE 4	根据 SEE DRAW

注：1) 除特别说明外，管体上接管长度均指从管口中心线至管帽端面距离。

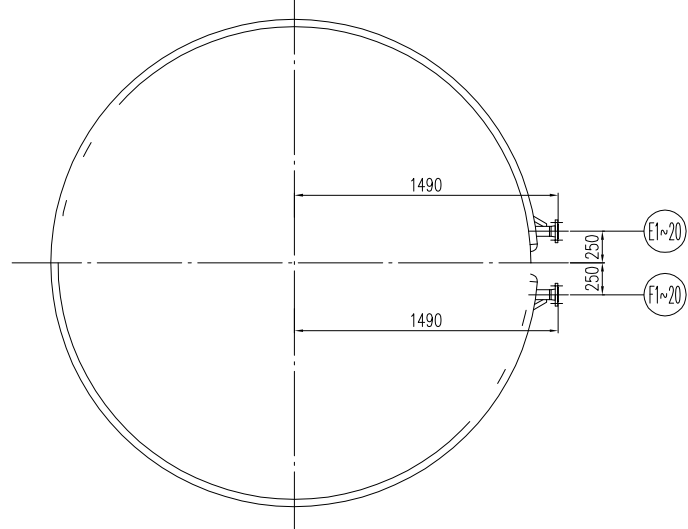
注：2) 除特别说明外，管体上接管长度均指从管口中心线至管帽端面距离。

2	2025.5.7	按5.7号图意见								
1	2025.4.16	按4.15号图意见								
0	2025.2.20	按工程图 REV.D00								
版次 REV.	日期 DATE	说明 DESCRIPTION	设计 DESIGN	校对 CHECK	审核 REVIEW	批准 AUTHD	标准审 STANDARD REVIEWER			
<p>本图据为江阴申科博机械有限公司财产,未经本企业许可不得转让给第三者或复制</p> <p>THIS DRAWING IS THE PROPERTY OF JIANGYIN KEBO MACHINERY CO.,LTD. UNAUTHORIZED DISCLOSURE TO ANY THIRD PARTY OR DUPLICATION IS NOT PERMITTED</p>										
 <p>江阴申科博机械有限公司 Jiangyin Kebo Machinery Co.,Ltd.</p>			用户 CLIENT	PT PETRO OXO NUSANTARA						
 <p>组别名称 LIGHT COMPONENT TOWER LIGHTLY ASSEMBLY DRAWING ITEM NO: I-2401</p>			项目 PROJ. 装置 PLANT	30,000 TPA NEOPENTYL GLYCOL PROJECT						
<p>比例 SCALE</p>			图号 DRAWING NO.	Neopentyl Glycol Plant						
<p>1 : 50</p>			<p>第 1 套 共 4 套 PAGE 1 OF 4</p> <p>JKB-S2503-00-1/2</p>							

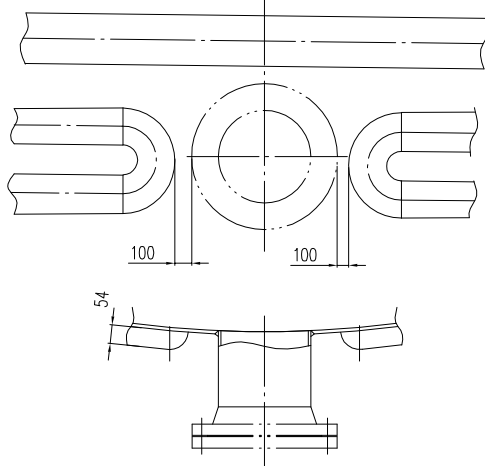




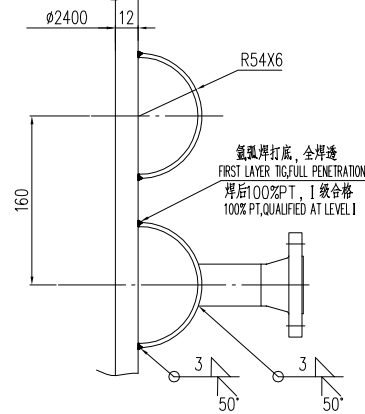
伴热盘管俯视图  
TOP VIEW DETAILS OF HEATING COIL  
1:5



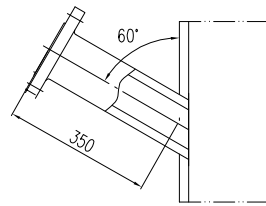
半管通大接管示意图  
SCHEMATIC DIAGRAM OF HALF PIPE MEETING LARGE NOZZLE  
1:5



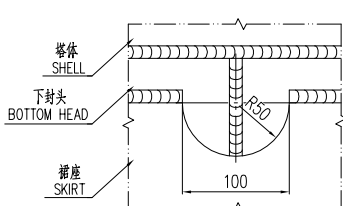
半管详图  
SCHEMATIC DIAGRAM OF HALF PIPE  
1:5



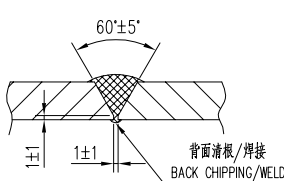
C32侧装压力计接管示意图  
SCHEMATIC DIAGRAM OF SIDE-MOUNTED PRESSURE GAUGE NOZZLE  
1:6



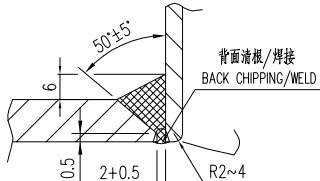
裙座壳缺口详图  
DETAIL OF GAP IN SKIRT SHELL  
不按比例 NO SCALE



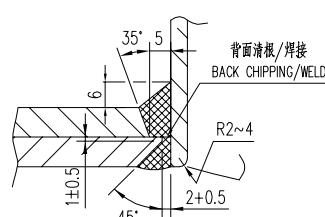
A、B类焊接接头  
"A" & "B" JOINT OF SHELL  
1:1



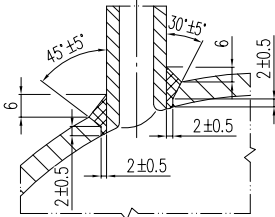
接管与壳体焊接接头(I)  
NOZZLE JOINT TO SHELL(I)  
1:1



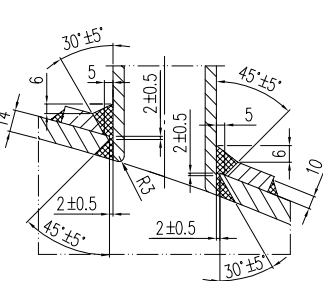
接管与壳体焊接接头(II)  
NOZZLE JOINT TO SHELL(II)  
1:1



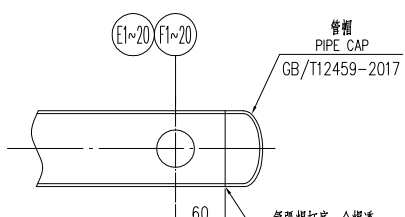
接管与壳体焊接接头(III)  
NOZZLE JOINT TO SHELL(III)  
1:1



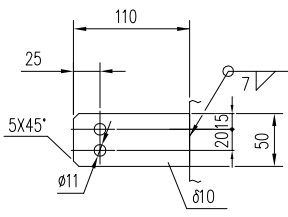
接管与壳体焊接接头(IV)  
NOZZLE JOINT TO SHELL(IV)  
1:1



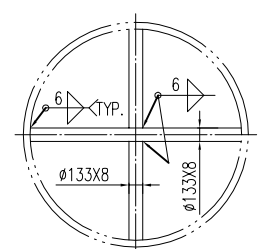
伴热蒸汽入口/出口端部示意图  
SCHEMATIC DIAGRAM OF HEAT TRACING STEAM  
INLET/OUTLET END  
不按比例 NO SCALE



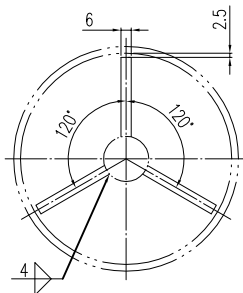
接地板详图  
EARTH PLATE  
1:4



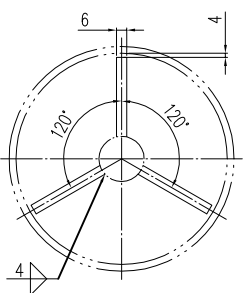
件号20和21裙座支撑管详图  
DETAILS OF NO.20 AND 21 SKIRT SUPPORT PIPE  
不按比例 NO SCALE



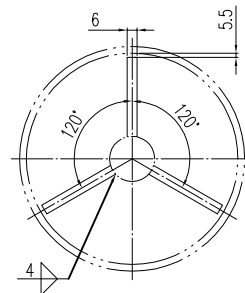
A-A  
不按比例 NO SCALE



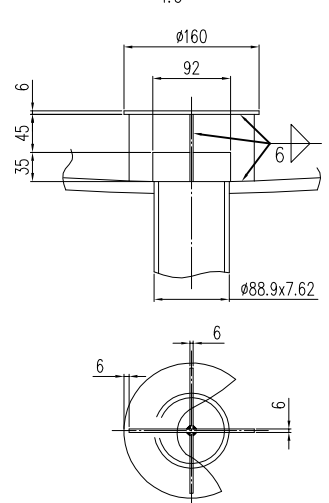
B-B  
不按比例 NO SCALE



C-C  
不按比例 NO SCALE



管口N05防涡流板详图  
DETAILS OF NOZZLE N05 ANTI-VORTEX PLATE  
1:5



112, 012	GB/T12459-2017	90°弯头 DN50-Sch80s 90EL ELBOW	1	S31603		0.9	012	
	ASME B16.5-2020	接管 Ø60.3X5.54 L=152/170 PASSAGE PIPE	1/1	S31603 III		1.2/1.3	112/012	
		法兰 2" - CLASS150 WN/RF Sch80s FLANGE	2	S31603 II		2.8	5.6	
		支腿板 47X100X6 SUPPORT PLATE	3	S31603		0.19	0.57	13
		通径管 Ø13.3X4 L=150 PASSAGE PIPE	1	S31603			1.7	13
3, 03, 6, 06, 7, 07	GB/T12459-2017	90°弯头 DN20-Sch80s 90EL ELBOW	3	S31603		0.13	0.39	03, 06, 07
		接管 Ø26.7X3.91 L=1275/135 PASSAGE PIPE	1/1	S31603		2.85/0.3	13/03	
		接管 Ø26.7X3.91 L=161/142 PASSAGE PIPE	2/2	S31603		0.36/0.30, 0.72/0.6	0.17/0.06, 0.7	
	ASME B16.5-2020	法兰 3/4" - CLASS150 WN/RF Sch80s FLANGE	6	S31603 II		1	6	
		支腿板 43X100X6 SUPPORT PLATE	3	S31603		0.17	0.51	12
		通径管 Ø13.3X4 L=150 PASSAGE PIPE	1	S31603			1.7	12
12, 02	GB/T12459-2017	90°弯头 DN25-Sch80s 90EL ELBOW	1	S31603		0.2	0.2	02
	ASME B16.5-2020	接管 Ø33.4X4.55 L=630/178 PASSAGE PIPE	1/1	S31603		2/0.6	12/02	
		法兰 1" - CLASS150 WN/RF Sch80s FLANGE	2	S31603 II		1.2	2.4	
11, 01, 14, 04, 05, 08-11, 08-11	GB/T12459-2017	90°弯头 DN15-Sch80s 90EL ELBOW	7	S31603		0.1	0.7	01, 04, 05, 08-11, 08-11
		接管 Ø21.3X3.73 L=121 BLIND FLANGE	7	S31603		0.2	1.4	
		接管 Ø21.3X3.73 L=161 BLIND FLANGE	7	S31603		0.26	1.82	
	ASME B16.5-2020	法兰 1/2" - CLASS150 WN/RF Sch80s FLANGE	14	S31603 II		0.95	13.3	
		弯头 DN100-III-6 180ES ELBOW	15	S30403		4.8	72	一步第二
	GB/T12459-2017	管帽 DN100-III-6 C PIPE CAP	20	S30403		4.2	84	管口号
		手锯管 Ø108X6 L=46m	20	S30403			7000	一步第二
		接管 Ø33.4X4.55 L=197 PASSAGE PIPE	40	S30403		0.65	26	管口号
	ASME B16.5-2020	法兰 1" - CLASS300 WN/RF Sch80s FLANGE	40	S30403 II		1.9	76	管口号
SA1-2		接管 Ø60.3X8.74 L=250 PASSAGE PIPE	2	Q345R		44.5	89	管口号
SV1-4		接管 Ø89X8 L=180 PASSAGE PIPE	4	S31603		1.6	6.4	管口号
	HG/T20631-2009	缠绕垫 D80-150-T4.5 5525 SPIRAL WOUND GASKET	2	S31603+柔性石墨		/	/	管口号
	HG/T20634-2009	螺母 M16	16	30CrMoA		0.05	0.8	管口号
	HG/T20634-2009	全螺纹螺栓 M16X105 FULL THREAD STUD	8	35CrMoA		0.16	1.28	管口号
C51 ~52	ASME B16.5-2020	法兰 2" - CLASS150 BL/RF BLIND FLANGE	2	S31603 II		4.1	8.2	管口号
		接管 Ø88.9X7.62 L=211 PASSAGE PIPE	2	S31603		3.3	6.6	管口号
	ASME B16.5-2020	法兰 3" - CLASS150 WN/RF t=7.62 FLANGE	2	S31603 II		6.5	13	管口号
	HG/T20631-2009	缠绕垫 D80-150-T4.5 5525 SPIRAL WOUND GASKET	4	S31603+柔性石墨		/	/	管口号
	HG/T20634-2009	螺母 M16	32	30CrMoA		0.05	1.6	管口号
C41 ~42, C61 ~62	HG/T20634-2009	全螺纹螺栓 M16X105 FULL THREAD STUD	16	35CrMoA		0.16	2.56	管口号
	ASME B16.5-2020	法兰 1" - CLASS150 BL/RF BLIND FLANGE	4	S31603 II		4.1	16.4	管口号
		接管 Ø88.9X7.62 L=278/238 PASSAGE PIPE	1/3	S31603		4.3/11	14.1	管口号
		接管 Ø60.3X8.74 L=247/210 INNER PIPE	1/3	S31603		2.8/7.1	9.4	管口号
	SH/T3426-2014	缠绕垫 2" 1/2" - CLASS150 WN/RF t=8.74 JACKET PIPE FLANGE	4	S31603 II		5.6	22.4	管口号
	HG/T20631-2009	缠绕垫 D80-150-T4.5 5525 SPIRAL WOUND GASKET	2	S31603+柔性石墨		/	/	管口号
	HG/T20634-2009	螺母 M16	16	30CrMoA		0.05	0.8	管口号
	HG/T20634-2009	全螺纹螺栓 M16X95 FULL THREAD STUD	8	35CrMoA		0.144	1.152	管口号
	ASME B16.5-2020	法兰 2" - CLASS150 BL/RF BLIND FLANGE	2	S31603 II		2.3	4.6	管口号
	ASME B16.5-2020	法兰 2" - CLASS150 LWN/RF B=52 FLANGE	1/1	S31603 II		8.5/9.7	17.4	管口号
	HG/T20631-2009	缠绕垫 D40-150-T4.5 5525 SPIRAL WOUND GASKET	5	S31603+柔性石墨		/	/	管口号
	HG/T20634-2009	螺母 M14	40	30CrMoA		0.035	1.4	管口号
	HG/T20634-2009	全螺纹螺栓 M14X85 FULL THREAD STUD	20	35CrMoA		0.102	2.04	管口号
	ASME B16.5-2020	法兰 1" - CLASS150 BL/RF BLIND FLANGE	5	S31603 II		1.37	6.85	管口号
	ASME B16.5-2020	法兰 1" - CLASS150 LWN/RF B=41 FLANGE	1/4	S31603 II		6/20	15	管口号
WN-04	HG/T21521-2014	A.R.F. X (W-D-5525) 600-16 s=14 MANHOLE	4	组合件 COMPONENT		447	1788	管口号
		件号 Ø19.1X12.7 L=248	2	S31603		16.2	32.4	管口号
		接管 Ø168.3X10.97 L=201	2	S31603		8.65	17.3	管口号
	SH/T3426-2014	缠绕垫 2" 1/2" - CLASS150 WN/RF t=10.97 JACKET PIPE FLANGE	2	S31603 II		24	48	管口号
		气密封垫及支撑	1			/	/	管口号
		件号 Ø610X14 L=264 INNER PIPE	1	S31603		55	72	管口号
	SH/T3426-2014	缠绕垫 2" 1/2" - CLASS150 WN/RF t=16 JACKET PIPE FLANGE	1	S31603 II		193		管口号

		防涡流板 II ØØ17X6 ANTI-VORTEX RIB PLATE II	2	S31603	0.19	0.38	
		防涡流板 I ØØ148X6 ANTI-VORTEX RIB PLATE I	1	S31603		0.38	
		防涡流板 Ø160X6 ANTI-VORTEX PLATE	1	S31603		0.7	
		支持板 Ø5X100X6 SUPPORT PLATE	3	S31603	0.3	0.9	
		通径管 Ø325X8 L=150 PASSAGE PIPE	1	20		26.6	
N05	GB/T12459-2017	90°弯头 DN150-Sch80s 90ES ELBOW(OUTER)	1	S31603		2.6	
	GB/T12459-2017	90°弯头 DN150-Sch80s 90EL ELBOW(INNER)	1	S31603		2.67	
		外管 Ø168.3X10.97 L=1408/1139 OUTER PIPE	1/1	S31603		60/49	
		内管 Ø88.9X7.62 L=1397/1286 INNER PIPE	1/1	S31603		21/20	
	SH/3426-2014	缠绕垫 2" 1/2" - CLASS150 WN/RF t=7.62 JACKET PIPE FLANGE	1	S31603II		15.5	
N04	ASME B16.5-2020	法兰 2" - CLASS150 WN/RF t=8.74 FLANGE	1	S31603II		2.72	
	ASME B16.5-2020	接管 Ø60.3X8.74 L=316 PASSAGE PIPE	1	S31603		3.5	
		法兰 2" - CLASS300 WN/RF t=8.74 FLANGE	1	S31603II		4.1	
		支腿板 65X100X6 SUPPORT PLATE	3	S31603	0.3	0.9	
		通径管 DN500 Ø14 L=150 PASSAGE PIPE	1	Q345R		26.6	
	NB/T11025-2022	补强圈 dn250X14-D REINFORCING PAD	1	S31603		13.4	
N03	GB/T12459-2017	90°弯头 DN150-Sch80s 90ES ELBOW(OUTER)	1	S31603		9.3	
	GB/T12459-2017	90°弯头 DN250-Sch80s 90EL ELBOW(INNER)	1	S31603		58.6	
		外管 Ø355.6X12.7 L=736/2402	1/1	S31603		47.6	
		内管 Ø273X12.7 L=642/2587	1/1	S31603		80/262	
		外管 Ø273X12.7 L=642/2587	1/1	S31603		53/213	
	SH/3426-2014	缠绕垫 2" 1/2" - CLASS150 WN/RF t=12.7 JACKET PIPE FLANGE	1	S31603II		73	
N02	NB/T11025-2022	补强圈 dn500X14-D REINFORCING PAD	1	S31603		36.5	
		接管 Ø508X16 L=219 PASSAGE PIPE	1	S31603		43	
	ASME B16.5-2020	法兰 2" - CLASS150 WN/RF t=16 FLANGE	1	S31603II		92	
	HG/T20631-2009	缠绕垫 D80-150-T4.5 5525 SPIRAL WOUND GASKET	1	S31603+柔性石墨		/	N07
	HG/T20634-2009	螺母 M16	8	30CrMoA	0.05	0.4	N07
N01, N07, N08	HG/T20634-2009	全螺纹螺栓 M16X100 FULL THREAD STUD	4	35CrMoA	0.16	0.64	N07
	ASME B16.5-2020	法兰 3" - CLASS150 BL/RF BLIND FLANGE	1	S31603II		4.1	N07
		外管 Ø88.9X7.62 L=238 OUTER PIPE	3	S31603	3.67	11.01	
		内管 Ø60.3X8.74 L=210 INNER PIPE	3	S31603	2.36	7.08	
	SH/3426-2014	缠绕垫 2" 1/2" - CLASS150 WN/RF t=8.74 JACKET PIPE FLANGE	3	S31603II	5.6	16.8	
序号 NO. 图号	图号或标准号 DWG OR STAND. NO.	名称 DESCRIPTION	数量 QTY.	材料 MATERIAL	单件重量 UNIT WEIGHT (kg)	总重量 TOTAL WEIGHT (kg)	备注 REMARKS
22	HG/T 21574-2018	运输鞍座 TRANSPORTATION SADDLE	1	组合件 COMPONENT			
21		螺母 APA-5-50 H=300 TAIL LUG	1	组合件 COMPONENT		37.3	
20		裙座支撑管 Ø13.3X8 L=1594 SKIRT SUPPORT PIPE I	2	20	39.4	78.8	
19	STD-EQ-001.1	裙座支撑管 Ø13.3X8 L=3188 SKIRT SUPPORT PIPE I	1	20		78.8	
18	STD-EQ-001.20	名称 DESCRIPTION	1	S30408		0.25	
17	HG/T 21574-2018	名称 DESCRIPTION	1	组合件 COMPONENT		3.5	
16	GB/T 25198-2023	螺母 CHA2400X14(12.1) HEAD	2	Q235B/S31603	119.7	239.4	
15	HG/T 21639-2005-10	螺母 W=500 S=1800 TOP LUG FOR TOWERS	1	组合件 COMPONENT		359	
14		裙座外管件 PRE-WELDED COMPONENTS OUTSIDE THE TOWER	1	组合件 COMPONENT		/	特定 HOLD
13		裙座内管件 PRE-WELDED COMPONENTS INSIDE THE TOWER	1	组合件 COMPONENT		/	特定 HOLD
12		螺母 DN2400 Ø12 L=19850	1	S31603		14315	
11		补强圈 1/25X125X10 L=8.37m REINFORCING RING	7	S31603	166	1162	
10	060-STD-EQ12.01	外表面绝缘层(型 W)-60 Ø4 EXTERNAL INSULATION RING(TYPE W)	1	S31603		14.5	
9	060-STD-EQ12.01	内表面绝缘层(型 W)-90 Ø6 INTERNAL INSULATION RING(TYPE W)	1	S31603		33	
8		裙圈(改型) DN2493/DN2400 Ø14 L=855 SKIRT(CHANGEOVER PORTION)	1	S31603		737	
7		裙圈 1 DN3200/DN2493 Ø14 L=6482	1	Q345R		6405	
6		接地板 110X50X10 EARTH PLATE	2	S30408	0.4	0.8	
5		垫板 1400X9020 BASE	24	Q345R	2	48	
4		盖板 Ø3508/Ø3195X28 COVER PLATE	1	Q345R		369	
3		盖板 Ø20 RIG ID PLATE	48	Q345R	7	336	
2		基础板 Ø3508/Ø3028X28 BASE PLATE	1	Q345R		542	
1	JKB-S2503-01	基础模板 TEMPLATE	1	组合件 COMPONENT		423.5	
序号 NO.	图号或标准号 DWG OR STAND. NO.	名称 DESCRIPTION	数量 QTY.	材料 MATERIAL	单件重量 UNIT WEIGHT (kg)	总重量 TOTAL WEIGHT (kg)	备注 REMARKS
2	2025.5.7	垫5.7号裙圈见		设计	校核	审核	批准
1	2025.4.16	垫4.15号裙圈见		设计	校核	审核	批准
0	2025.2.20	技术交底 REV.000		设计	校核	审核	批准
版次 REV.	日期 DATE	说明 DESCRIPTION	设计 DSO	校核 CHECK	审核 REVIEW	批准 AUTHO	标准审查 STANDARD REVIEW
本图纸为江阴市科博机械有限公司财产,未经本公司许可不得转让给第三者或复制							
THIS DRAWING IS THE PROPERTY OF JIANYIN KEBO MECHANICAL CO.,LTD. UNAUTHORIZED DISCLOSURE TO ANY THIRD PARTY OR DUPLICATION IS NOT PERMITTED.							
江阴市科博机械有限公司 Jianyin Kebo Machinery Co.,Ltd.				用户 CLIENT PT PETRO OXO NUSANTARA			
图名 DRAWING NAME		轻组分塔器 LIGHT COMPONENT TOWER PROJ. ASSEMBLY DRAWING ITEM NO.:		30,000 TPA NEOPENTYL GLYCOL PROJECT Neopentyl Glycol Plant			
比例 SCALE		1:50		图号 DRAWING NO.		JKB-S2503-00-2/2	